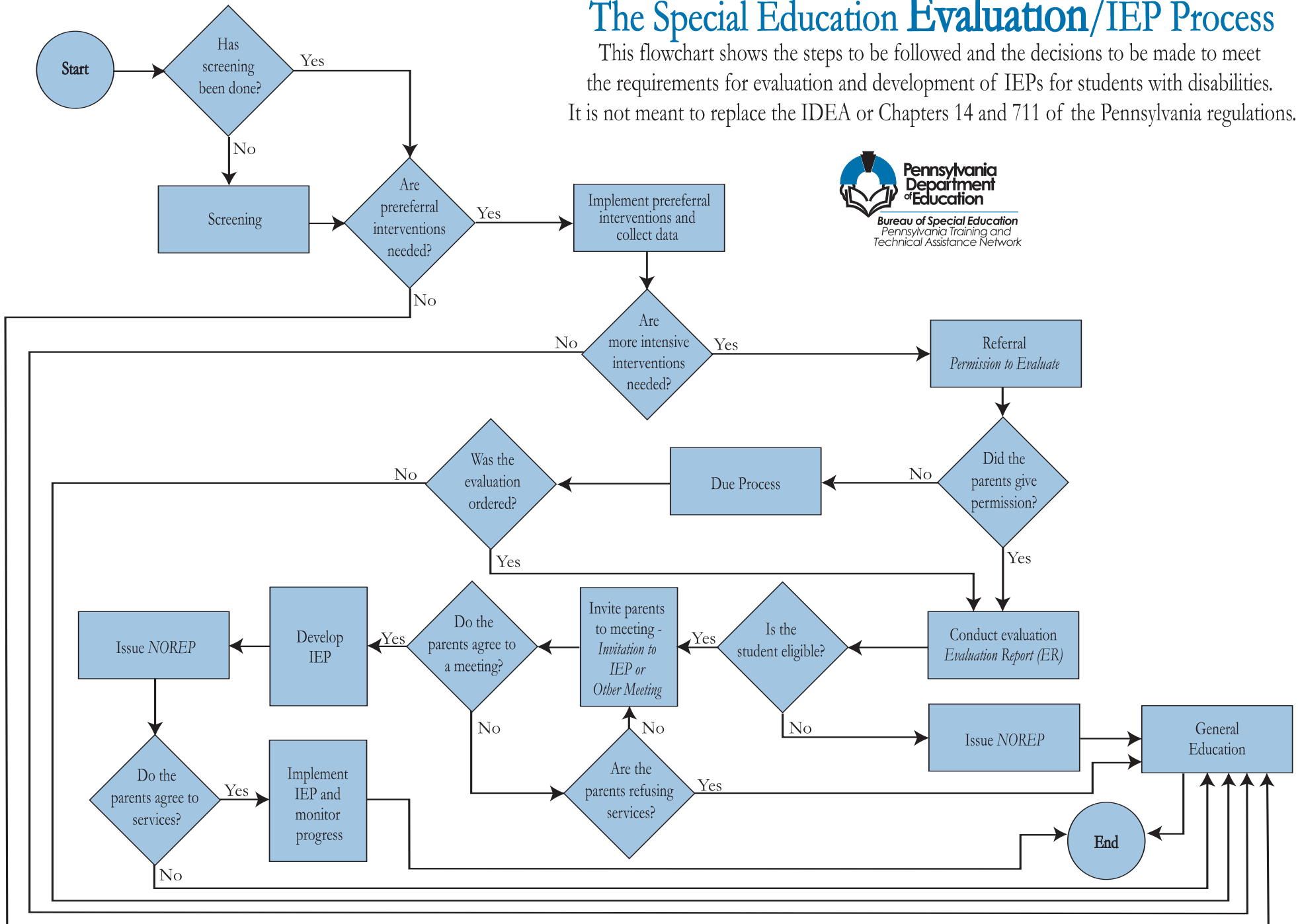
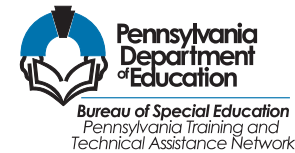


The Special Education Evaluation/IEP Process

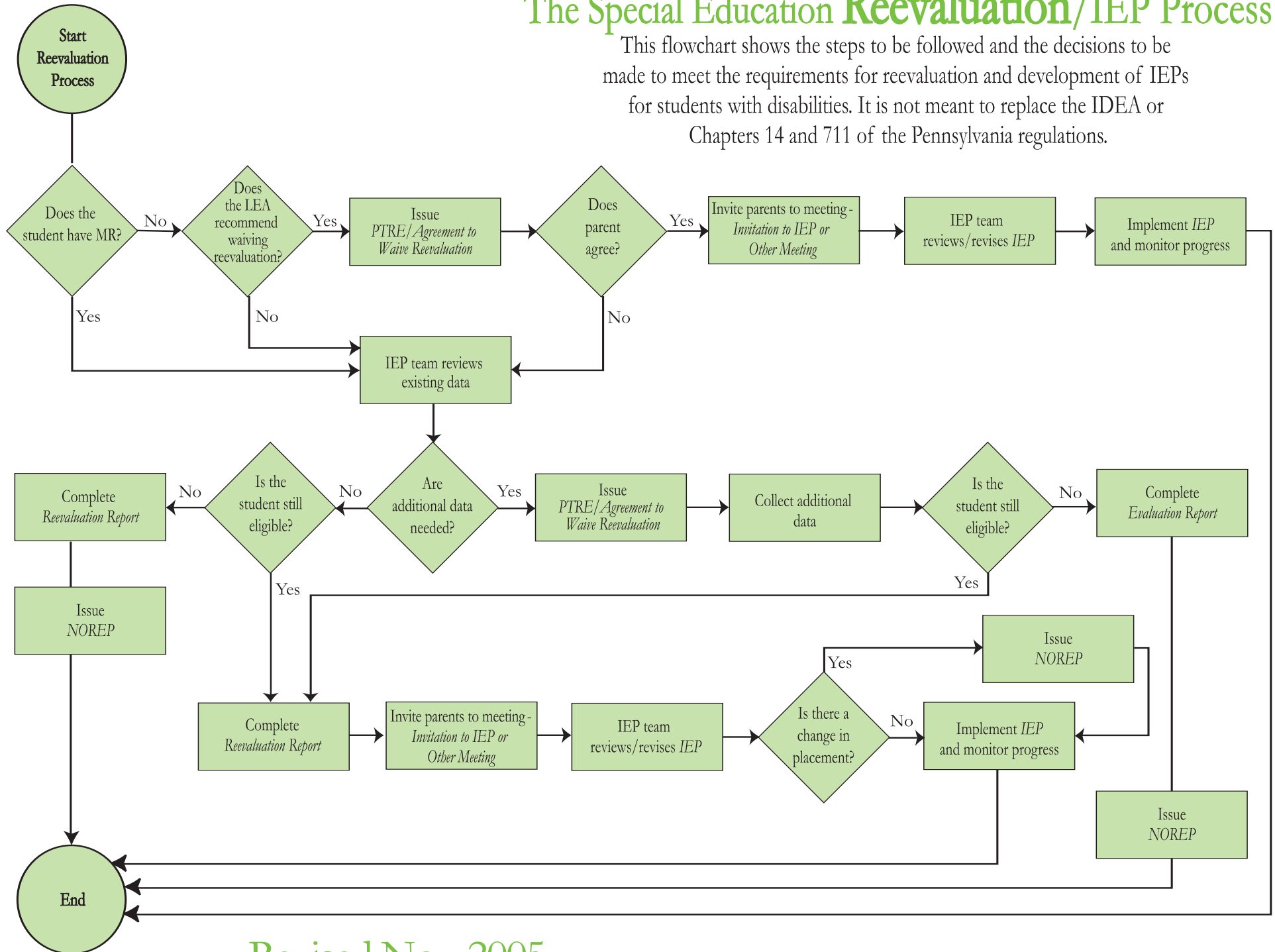
This flowchart shows the steps to be followed and the decisions to be made to meet the requirements for evaluation and development of IEPs for students with disabilities. It is not meant to replace the IDEA or Chapters 14 and 711 of the Pennsylvania regulations.



Revised Nov. 2005.

The Special Education Reevaluation/IEP Process

This flowchart shows the steps to be followed and the decisions to be made to meet the requirements for reevaluation and development of IEPs for students with disabilities. It is not meant to replace the IDEA or Chapters 14 and 711 of the Pennsylvania regulations.



Revised Nov. 2005.

For additional copies, visit the PaTTAN website at www.pattan.net or contact PaTTAN at 610-265-7321 or TTY 610-768-9723.